

LKTA Tábor

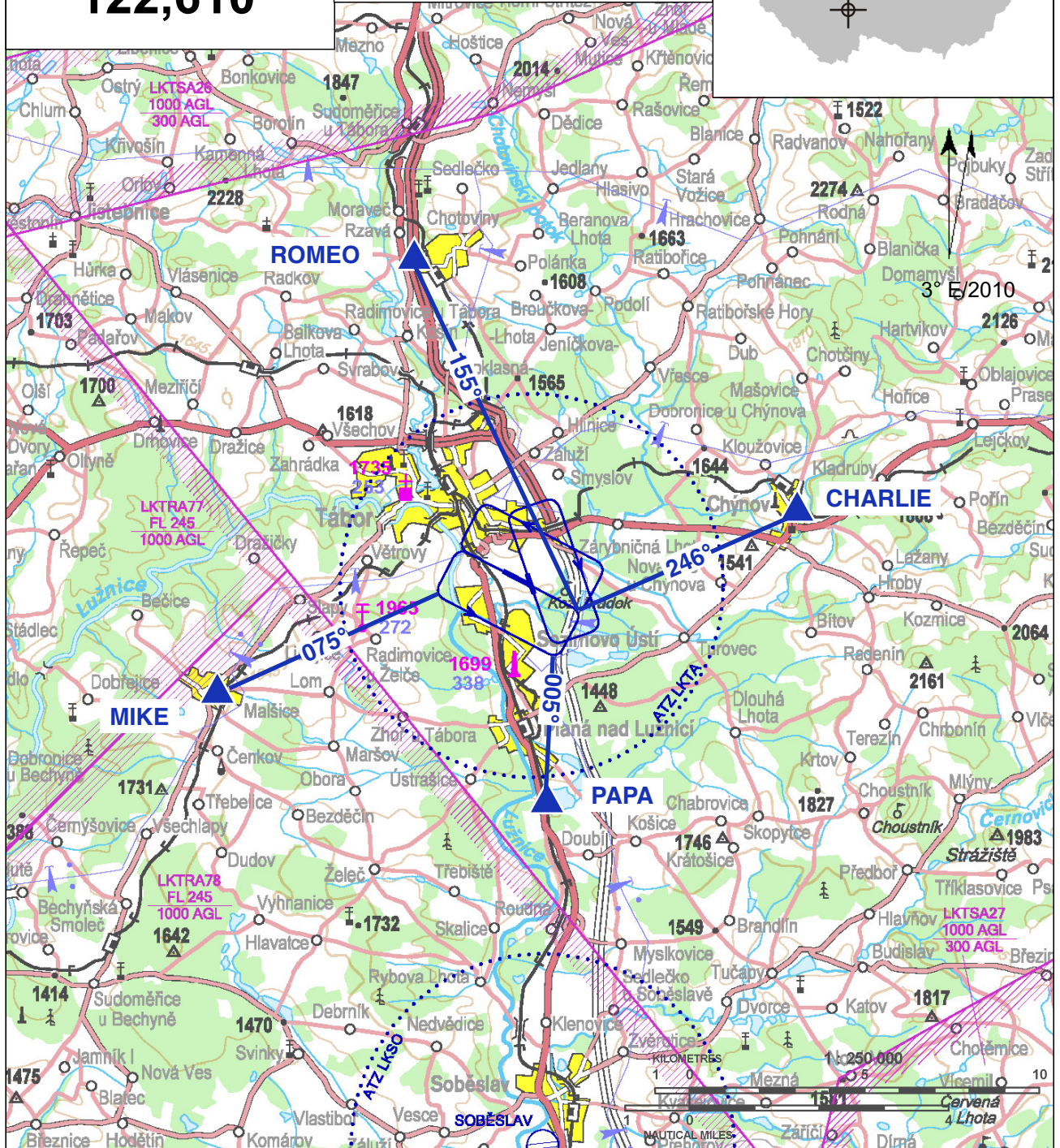
§ Public domestic aerodrome

✈ VFR day/night, parachute jumping operation



Tábor RADIO
122,610

ARP: 49° 23' 28" N, 14° 42' 30" E
3 km SE Tábor
ELEV: 1440 ft / 439 m
Circuit: 2460 ft / 750 m AMSL



! The roads near the threshold of RWY 11 shall be flown over at a minimum height of 15 m from the lowest part of the aircraft or towed object during take-off and landing.

Usability of the aerodrome only VFR/day. VFR/night only after previous agreement with the aerodrome operator.

